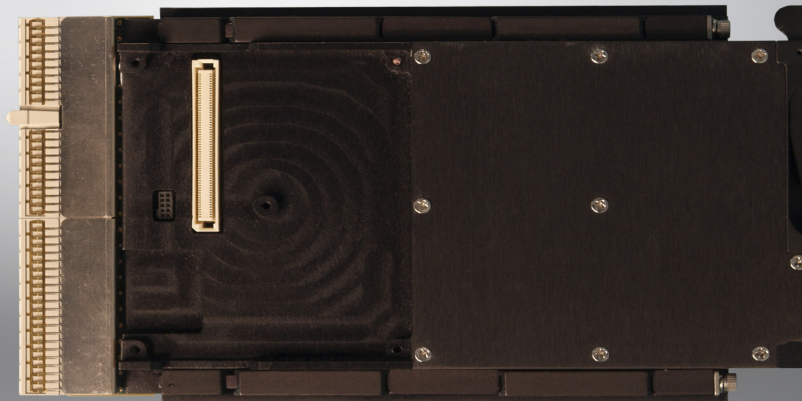


PC3030 SBC

Single Board Computer



Best-In-Class, Single Board Computer

The PC3030 3U Single Board Computer is designed for combat vehicle application, and withstands in the most harshest environments.

Coupled with the best-in-class I/O capabilities, the PC3030 features dual-core processors & more.

Supports Intel® Virtualization Technology, Dual Gigabit Ethernet, and up to 8 GB DDR3 1066 MHz memory.

Features

- Choice of ULV 1.2 GHz, LV 1.86 GHz, or SV 2.26 GHz dual-core processors.
- Up to 8 GB DDR3 1066 MHz Memory.
- Supports Intel Virtualization Technology.
- Dual Gigabit Ethernet 10/100/1000 Base-T.
- VITA 47.
- Flexible mezzanine site for feature expansion/customization.

Technical Information

Processing Unit

Intel® Core™ 2 Duo ULV 1.2 GHz, LV 1.86 GHz, or SV 2.26 GHz
Supports Intel® Virtualization Technology (VT-x, VT-d)
Supports Intel® Trusted Execution Technology (TXT)
6 MB (LV and SV) or 3 MB (ULV) L2 cache on-die
1066 MHz (LV and SV) or 800 MHz front side bus
Up to 8 GB DDR3 Memory (1066 MHz LV and SV, 800 MHz ULV)

Interfaces

Dual Gigabit Ethernet 10/100/1000 Base-T (PHY/SerDes)

- Boot from LAN support
- 2 x External Serial ATA Interfaces (eSATA)
- 3 x USB 2.0 ports
- Boot From USB support
- 2 x Configurable serial ports (RS-232/RS-422)
- 4 x GPIOs capable of generating interrupts
- Up to 16 GB of onboard SATA flash storage
- Integrated TPM 1.2
- PICMG 2.9 and IPMI 1.5 with VITA 46.11 subset
- cPCI System Slot-only supporting up to 3 peripherals
- Flexible custom mezzanine site for feature expansion/customization (XMS)

Graphics

Intel® X4500 Internal graphics
CRT video output

Optional XMS Mezzanine Functions

Dual Gigabit Ethernet
Dual DVI or DisplayPort™ graphics output ports
24-bit resolution High Definition Audio with stereo Line In/Out
Mic in and 1.5 W speaker output
Additional SATA flash storage

Operating Systems

Microsoft Windows®
Linux, RHEL and others
VxWorks 6.x
LynxOS
Solaris x86

Environmental Specifications

Conduction cooled per ANSI/VITA 30.1

VITA 47 Compliant

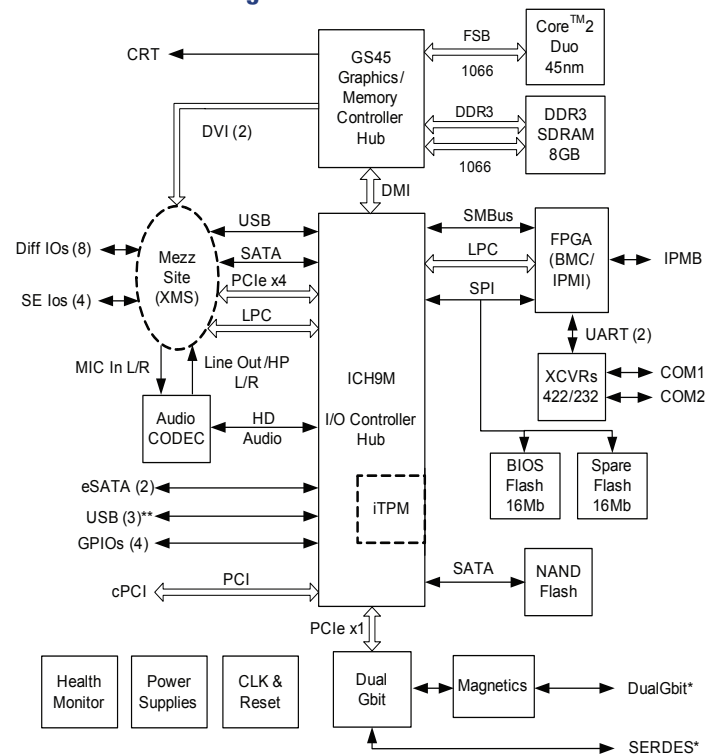
Operating temperature: CC4, -40°C to +85°C (-40°F to +185°F) at card edge

Storage temperature: C4, -55°C to +105°C (-67°F to +221°F)

Vibration: V3, extended to .12 g/Hz from 5 to 2000 Hz

Shock: OS2, 40 g, 11 msec

PC3030 Block Diagram



* The SERDES and Gbit pins are shared on the backplane.
** USB 3 is data only. Vbus must be supplied by the backplane

GENERAL DYNAMICS
Mission Systems

CANADA
gdmissionsystems.ca
info@gd-ms.ca

UNITED KINGDOM
gd-ms.uk
enquiries@gd-ms.uk

